



DALLAS COMPACT

BASIC SPECIFICATIONS

Size:	152 x 213 x 85cm
Jets:	24
Litres:	852
Pump:	1 Gecko™ EU / 3.0 HP
Electrical:	13 amp
Water Flow:	225 GPM / 110 GPM

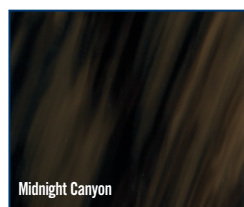
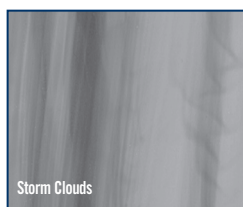
CAPACITY



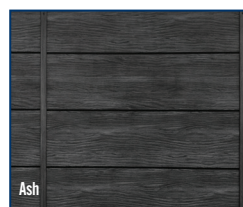
STANDARD FEATURES

Waterway™ Orion Jets	Grey Padded Headrests
Gecko™ YE Class Pack	Bluetooth™ Audio System with Transducers
Gecko™ K362 Digital Topside Control	Heater
SimpleClear UV-C WP	Waterfalls / Fountain Jets
2KW Heater	"Elite" Ash Maintenance Free Skirting
Gecko™ EU Pump	Single Master Massage Footwell Jet
4.6M² Filtration	ABS Bottom-Wrap
RMAX® Insulation Panels	10-5cm Cover - Standard

Acrylic Color Options



Elite Skirting



Lucite SPA



Waterway

Dynasty Spas reserves the right to change product selections and/or make product modifications. Your Dynasty Spa Dealer/Contractor is an independent business person and not an agent or employee of Dynasty Spas or any of its subsidiaries. Neither Dynasty Spas nor its subsidiaries accept any responsibility for any representations, statements or contracts made by any Hot Tub Dealer/Contractor.

Note: Color samples shown are representations of actual color, but are for identification only. Because the color may vary, Dynasty Spas does not guarantee that this color will be an exact match to the image shown.

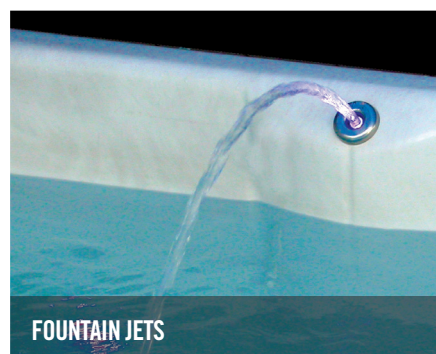
The Bluetooth® word mark and logo are registered trademarks owned by Bluetooth SIG, Inc. Other trademarks and trade names are those of their respective owners



STAINLESS STEEL JETS



WATERFALLS



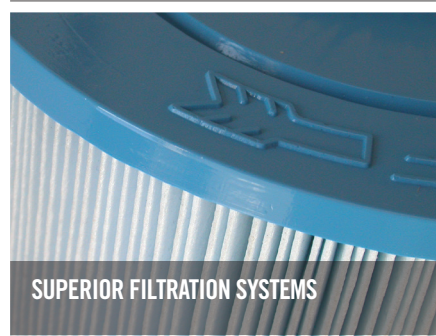
FOUNTAIN JETS



BLUETOOTH™ AUDIO SYSTEM



RMAX® INSULATION PANELS



SUPERIOR FILTRATION SYSTEMS